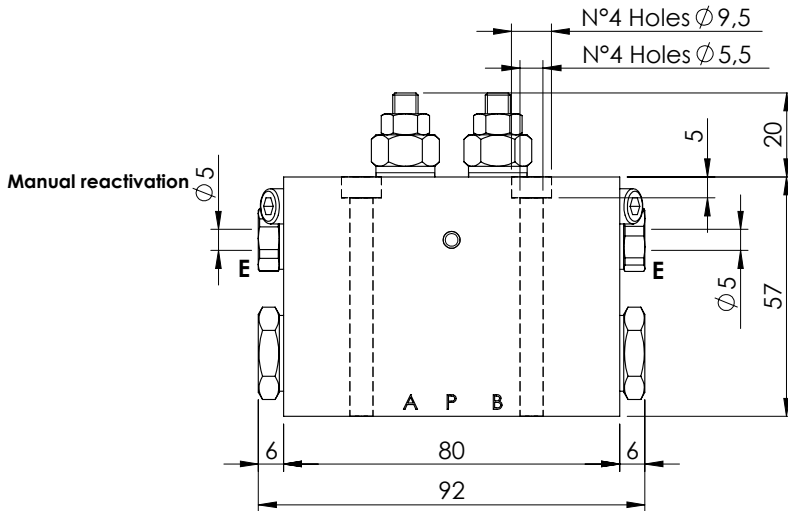
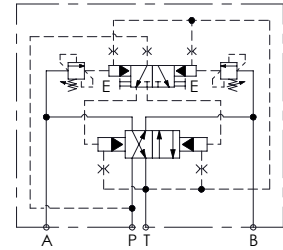
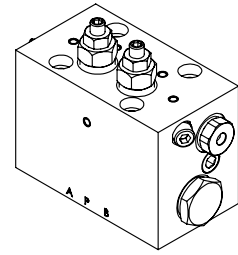
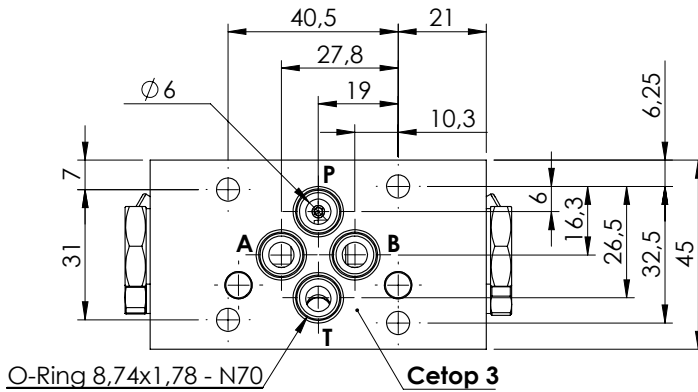


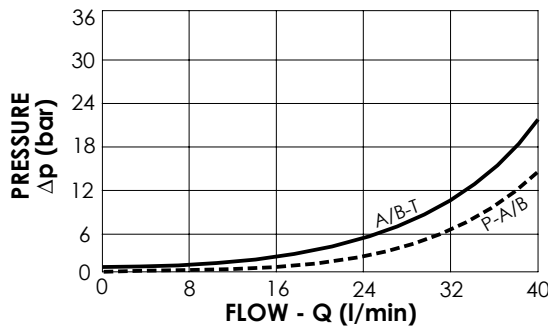
**AUTOMATIC DIRECTIONAL VALVE**

**MDAP-040-NNNR PRESSURE SWITCHING**



**SPECIFICATIONS**

Max. operating pressure:	350 bar
Rated flow:	40 l/min
Manifold:	Black galvanized cast iron
Weight:	1,48 kg



**NOTES**

- Minimum required flow: 3 l/min
- Actuator working pressure should always be lower than the automatic switching valve relief setting.
- Automatic switching valve relief setting should always be lower than pump relief valve setting.

**ORDERING CODES**

Quick code	Description	Main ports size	Standard setting (bar, Q=5 l/min)	Adjust. range (bar)	Pressure increase (bar/turn)
MD000027	MDAP-040-NNNR-NP-N06-N350	A,B,P,T : CETOP 3	350	100-350	95
MD000026	MDAP-040-NNNR-NP-N06-N200	A,B,P,T : CETOP 3	200	50-210	51
MD000025	MDAP-040-NNNR-NP-N06-N100	A,B,P,T : CETOP 3	100	15-100	26